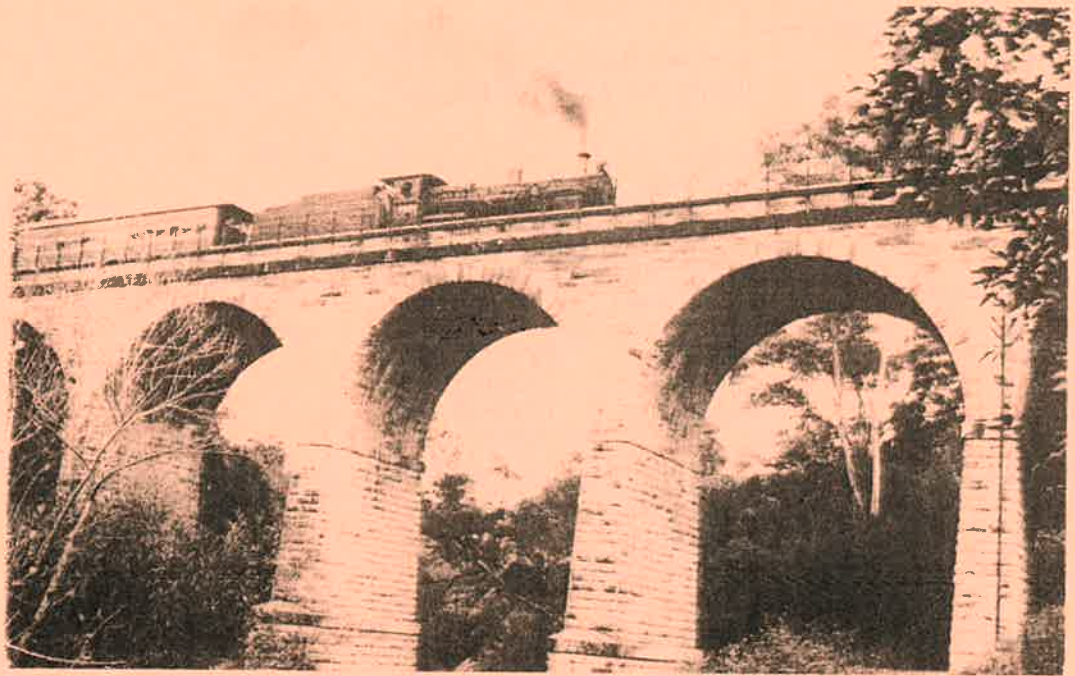


STONEQUARRY JOURNAL

DATE: September 1996

VOLUME: 10

NUMBER: 3



Picton & District Historical
&
Family History Society Inc.

**PICTON & DISTRICT HISTORICAL
&
FAMILY HISTORY SOCIETY INC.**

President:	Jan Ross	(046) 771430
Vice President:	Gail Hanger	
Secretary:	Judy Armstrong	(046) 771586
Publicity Officer / Social Secretary:	Judy Armstrong	(046) 771586
Treasurer:	Pat Shephard	
Librarian:	Helen Hanger	(046) 771276
Archivist:	Dianne Irwin	(046) 771970
Public Officer:	Peter Meyer	
Journal Editor:	Pat Shephard	(046) 309380

Research: Written enquiries **\$10, plus copying charges.**

All Correspondence to:

The Secretary
PO Box 64, Picton. NSW. 2571.

Library (Resource Centre):

The "Coach House"
Argyle Street, Picton.
(Enter by the Menangle Street Carpark at the rear of the National Australia Bank.)

Hours:

Thursday:	10 am to 2 pm
Saturday:	10 am to 3 pm
Sunday:	10 am to 3 pm

Meetings: Second Monday of each month (except January) at 7.30 pm.
The Community Rooms
Shire Hall
Menangle Street, Picton.

Membership Fees:

Pensioner:	\$10
Single:	\$15
Family:	\$20

The Stonequarry Journal is published quarterly. Articles, advertisements and ideas for publication in the journal are most welcome. Contact the editor, Pat Shephard, or leave material at the Coach House at least one month before publication. Items for the December Journal are due by 11 November.

This work has been assisted by funds allocated to the Royal Australian Historical Society by the Ministry for Arts, New South Wales.

CONTENTS

News Items	2
Properties /Localities Within Wollondilly Shire	3
Berkeley Lodge, by Jan Ross	3-4
New books on Library Shelf	4
Burial Records of the Picton District - including an article by Jan Ross and material compiled by research team	5-8
Medical Explanations compiled by Ken Farrell	9-10
Index of Newspaper Announcements by Colin Post	11-12

PUBLICATIONS FOR SALE

PUBLISHED BY THE SOCIETY

Coach House Chronicles

No.2	Wilton-East Bargo. A Brief History, by Pat Shephard	3.00
No.3	Lieut. General Sir Thomas Picton. K.G.C.B., by Cynthia Collison	2.00
No.4	Vault Hill (Picton), by Jan Ross	2.00
No.5	Harmony Home (Picton-Thirlmere), by Jan Ross	4.00
No.6	It Has No Definite Name - A Postal History of Tahmoor 1892-1916, by Marlane Fairfax	2.00
No.7	Antonio Manolis, The First Greek & Athenian Born Settler in New South Wales, by Jan Ross	2.00
No.8	Picton Court House & Lock-Up, by Jan Ross	2.00

(Only a few copies of each chronicle still remain in stock)

OTHER PUBLICATIONS FOR SALE

Glenmore Uniting Church (Formerly Methodist) Graveyard Transcript, Burial Records & Obituaries, by Marlane Fairfax	20.00
Thirlmere Public School 1888-1988	5.00
History of the Forbidden Land - Wollondilly Shire Council	5.00
The Trail Boss. The Fairley Family and Picton History, by Joan Brown	12.00

Prices do not include postage and packaging.

Allow	\$2 for 1 book
	\$3 for 2 -3 books
	\$4 for 4 books and over

NEW ITEMS

* **Outing in October** - On Sunday 13 October members are invited to visit an historic rural property near Picton. Meet at the Coach House at 12.45pm and bring a blanket and picnic lunch.

* **Hanger Family Reunion** - To be held at Queen Victoria Park, Picton, on Sunday 1 June 1997. Further details will be published in the next issue of this journal. Contact: Gail Hanger (046) 842179 or Helen Hanger (046) 771276.

* **"Back To" celebrations and a book launch** will be held on 5-6-7 October for the following publication: **"in those days ..."** Numerralla, Countegany, Peak View and Surrounding Areas. (Soft Cover, 110 pages). Cost \$15, plus \$5 postage. Available from:
The Numeralla History Group
C/- Mrs E. Schofield
"Greenhills", Jerangle. 2630.

* **NEWS FROM NEW ENGLAND.** The University of New England, Armidale, has sent a pamphlet advertising their **Local, Family and Applied History** course. For further information contact (067) 73 3020. The pamphlet is attached to the notice board in the Coach House.

Graham Wilson, lecturer in the above course, has also written regarding research he is undertaking into a travelling photographer, **Joseph Check**, "who travelled throughout Australia from 1884 until his death in 1936. Based at Leichardt, he travelled to country towns and once he established his studio would then travel throughout the district and photograph people and local scenes. A feature of his work is the fact that he placed his name 'J. Check' and date on each of the photographs; normally the right hand side. At times he even wrote down what he was photographing."

Graham would be extremely grateful if interested people could write to him and tell him details if they have photographs taken by this man in their possession. Contact: Graham Wilson, Lecturer.
C/- Faculty of Arts. Department of History.
University of New England. Armidale. NSW. 2351.

* The Resource Centre at the Coach House will be closed over the **Christmas Holidays** between Friday 20 December 1996 and Wednesday 8 January 1997. We will re-open on Thursday 9 January 1997.

Early plans are for the **Christmas Party meeting** to be held on Sunday 8 December at 2pm, instead of the following Monday evening. More details at the November General Meeting, or by contacting one of the committee members.

* Archives Authority of New South Wales. **Stocktake and Temporary Closure of Kingswood Search Room.** Monday 25 November to Monday 16 December 1996.

* **Research News from the Coach House:-** The Resource Centre at the Coach House is a busy place with our Librarian and Archivist (and assistants) accessioning and cataloguing a large collection of local studies material. An important part of this process is indexing.

Over the past two years we have been publishing in each quarterly journal one to two pages of Colin Post's **"Index to Newspaper Announcements"**. More recently, mention has been made to the fact that a number of members are working on upgrading and re-organising our **burial / cemetery / graveyard records**. In this journal is a brief article by Jan Ross, on the family of undertakers:- John Edmund, Sydney John and Remie Warters. Included is a selection of material giving examples of what researchers may find in the society's burial records.

Another project which our team would like to expand on is a **Properties / Localities Index**. A list is being made of all localities within the Wollondilly Shire mentioned in our records, e.g. from land records, obituaries, maps, newspapers, etc. We hope to identify exactly where these localities are (or where they once were) and prepare a small history on each. Refer to the article "Properties / Localities Index" elsewhere in this journal.

* **AGM** - Listed on the inside cover are the names and contact numbers of the new Executive. Thank you to last years committee for all the hard work they did during the year.

PROPERTIES / LOCALITIES WITHIN WOLLONDILLY SHIRE

Throughout Wollondilly Shire are many interesting place names. Some are well known, others have vanished from our maps and directories. Some were property names given by earlier settlers to their homesteads. Many of these names were changed or disappeared when the families moved out of the district. The name "Summer Hill" for example appears to have been associated with three different places within the shire. There was a "Summer Hill" at Upper Burragorang, one at Upper Picton and one at Wilton, East Bargo.

In this and the next few issues of the journal we will publish some of the names of various locations. Perhaps you would like to contribute to our index by adding a name to the list, by providing information or by writing a brief history of the property. All contributors will be acknowledged in future publications.

Following is a selection of names, plus a history of one of these properties written by Jan Ross.

Accalon, Bargo	Annafield, The Oaks	Berkeley Lodge
Brookside	Cedarmere, nr Picton	Colo Park
Crawford's Creek, Picton	Daisy Vale	Fairy Hill
Fig Tree, Burragorang	Glenrock	High Range, nr Picton
Jarvisfield	Long Point, nr Picton	Robinwood, Tahmoor
Round Hill, Wilton	Sharolyn Park, Wilton	Sylvandale, Pheasant's Nest
Teniot, Balmoral	Thorn Hill, Upper Picton	Trixby, Argyle St, Picton

BERKELEY LODGE

By: Jan Ross

Although the larger properties such as Jarvisfield employed a considerable number of workers, only three people were listed with the address of Stonequarry in the 1841 Census. One of these three was Dr MacDonald who was the Clerk of Petty Sessions and he resided at **Rose Cottage Farm** which had also been known as **Farrington Lodge**.

When **William Berkeley Campbell** passed away in 1904 he had resided in Picton for 64 years and had occupied Rose Cottage Farm (**Berkeley Lodge**) for approximately 58 years. As a youth Campbell had served in the Don Carlos War and had attained the rank of Captain. Arriving in Sydney in 1840 at the age of 23, he became a tutor to members of the Antill family and other children on the estate.

During the 1850's he was a mail contractor between Campbelltown and Picton as well as being the superintendent of St Mark's Church, Picton. W. B. Campbell grew potatoes and fruit and had a roadside stall where he sold his produce.

In 1906, the property was at the centre of controversy when a boundary dispute was the subject of a court case. It was generally agreed that the property of 7 acres had been originally part of a 100 acre grant to H. C. Antill. Initially, William Berkeley Campbell had been a tenant of Henry Colden Antill's and then at a later stage a tenant of Mrs Moggridge's. His daughter Roseanne Mary Campbell had purchased Rose Cottage Farm from Mrs Moggridge in 1892.

Fences were washed away in 1904 and the placement of new fences caused a disagreement. Issues such as high water marks, high banks of creeks, flood levels and water channels caused

just as many problems then as they do in the 1990's. Quinces, cherries, blackberries and plums had been planted in an attempt to stabilise the bank.

Two of William Berkeley Campbell's daughters remained at "Berkeley Lodge" until their deaths in the 1930's. "Wayfarers" regularly called in at the homestead and were given handouts. One week in 1907, there were 95 such visits and this was reported as being less than normal.

When "Berkeley Lodge" was auctioned in November 1980, it was sold to the Sheil family. The homestead on the Hume Highway was the property of Mrs Rita Turner who was the widow of George Turner. Mrs Turner and her late husband had lived on the property for 49 years. Berkeley Lodge was described as an elegant early colonial home of timber and brick construction with sweeping verandahs, nestling in the lap of Razorback and on Racecourse Creek.

NEW BOOKS ON THE LIBRARY SHELVES

The majority of the books on the library shelf at the Resource Centre (Coach House) are strictly for reference purposes and are not available for borrowing under any circumstances. However, there is a growing collection of more general reading material which may be borrowed by members for short periods of time, this includes journals from other societies and historical fiction such as *The Timeless Land*, by Eleanor Dark. Check with the librarian, or the person on roster duty, before borrowing this material and sign the lending book, noting the name of the material borrowed, the date and your name. Please remember to sign the book when returning the material.

NEW BOOKS:-

A Pictorial on Bushrangers, by Tom Prior, Bill Wannan, H. Nunn.
Australia in the Eighties. 1780-1880-1980.
Losing Ground. An Environmental History of the Hawkesbury River, by Sue Rosen.
The People's Almanac, by Wallechinsk & Wallace.
History of the Victorian School for Deaf Children.
The Bells of St Mary's. A History of the Catholic Community of Crookwell, NSW, by Rev. Brian Maher.
Tahmoor - Thirlmere Water Supply. Official Turning On.
The Timeless Land, by Eleanor Dark.
Relations in Records, A Guide to Family History Sources in the Australian Archives.
Australia's First Notable Town. MALDON. by Grant Blackman & John Larkin.
No Charity There - Short History of Social Welfare in Australia, by Brian Dickey.
Australian History and its Background. J.M. Howard.
Wreck Bay. Brian J. Egloff in association with members of the Wreck Bay Community.
The Romance of History. Lillian Vera Chettle-Goddard.
The World Science. Book 2. 1965. Human Geography. Peter G. Irwin.
Quarry Australia. Social and Environmental Perspectives on Managing the Nations Resources. By Robert Birrell, Doug Hill and John Stanley.
Australia Since 1900. D.W.Hunt and K.W.Marshall.

A "FREEBEE"

To members of **Christ Church Gladesville**, or a nearby **Local Historical Society**, or a member of **Rev. Howe's family** !! We have the following publication to give away. Just write to us.

THE DAWNING OF THAT DAY, by H. G. J. Howe, L. Th., Rector of Christ Church, Gladesville, NSW. Fourth Edition. Printed by R. Dey, Son & Co., Sydney. 1928.

BURIAL RECORDS OF THE PICTON DISTRICT

The information and examples on the following pages have been compiled in order to show researchers the type of material available within what the society terms as "burial records".

UNDERTAKERS OF PICTON:

THE WARTERS FAMILY & THE "WARTERS BURIAL REGISTERS". By: Jan Ross

By the end of 1898, John Edward Warter's had established himself as Picton's undertaker. However, John was also a saddler and a carpenter. As in most small country towns, people of that era were multi-skilled and invariably "undertakers" were also coach builders or carpenters.

Many cemeteries in Australia were set up by public subscriptions and this established the modern practice of matching local subscriptions by central government grants. Trustees from the community were appointed to ensure that everything functioned smoothly.

Until 1967, all public cemeteries were controlled and managed by these trusts whereby each religious group was responsible for the maintenance of its relevant section.

Our historical society is fortunate to have been the recipient of some of Picton's early burial registers and these are being used to supplement information in our cemetery transcripts which are currently in the process of being updated.

Initially these registers were kept by James Hooke and when he became ill in 1897, his stepson Caleb, who at one stage was the secretary/treasurer of the Church of England Trust, maintained the registers until 1909. Since then a number of people have completed the details in the registers.

As members of the Warters family were actively involved in St Mark's Church of England as well as being the undertakers, it is reasonable to assume that the registers eventually became their responsibility.

The registers provide details of burials where there has never been a headstone or the headstone has either not survived or has weathered over the years.

Featured on the same page of the local newspaper as Sydney John Warters' obituary (January 1948) was a large advertisement announcing "Dignified and Reverent Funerals" by Picton Motor Funerals Ltd "Opening Immediately".

One week later there was a special announcement in the local press. "I wish to notify the Residents of Picton and the Surrounding Districts that the Undertaking Business previously conducted by my late brother S. J. Warters, will be still carried on as usual, and any services entrusted to me will be given prompt and sympathetic attention." Remie Warters continued the family business until ten years before her death in 1972.

OBITUARY - OLD PICTON IDENTITY PASSES.

Picton Post, January 8, 1948. Page 2 Col. 3.

(From Colin Post's Index (and translations) of Announcements in Local Newspapers held by the society.)

WARTERS - Sydney John

Another link with the old life of Picton, has been snapped in the passing of one of the grand old men, Mr Sydney John Warters, (old Syd Warters as he was affectionately known) who died at his home in Argyle Street, last Friday, January 2nd, aged 74, after an illness of several weeks.

Born in Sydney, deceased was the eldest child of the late John Edmund and Eliza Warters. He came as a baby to reside in Picton with his parents and has lived in Argyle Street, ever since.

Mr Sydney Warters was known far and wide throughout the district, and was highly respected for the strict integrity which was an outstanding quality of his character. He worked as a carpenter and contractor and undertaker all his life, being both zealous and painstaking in all his undertakings.

As a citizen, one could not find a better man. He was one of the original founders of the Picton Brass Band which developed under his inspiration, was secretary for many years of Lodge Picton Masonic and the School of Arts, in which position he was keen and thorough; and was one of the trustees of St Mark's Church.

A life long member of the Anglican Church, he maintained a high Christian standard within his home circle, and in his dealings with men and by his passing, the Church and the community are poorer.

Deceased was the eldest of eleven children and was always devoted to his parents and brothers and sisters. For 23 years he has acted as a father to them, and they will assuredly miss him. He was predeceased by Wilfred, Stella (Mrs Power) and is survived by Otto of Fivedock, Elsie (Mrs W. A. Crawley) of Undercliffe, Myra (Mrs Ray) of Wellington Park, Mildred (Mrs Wilson) of Cronulla, Remie (Miss Warters) of Picton, Vera (Mrs Terrett) of Goulburn, Ray of Gosford and Neville of Waverley.

During his recent illness he was devotedly attended by his sisters, Miss R. Warters of Picton and Mrs Terrett of Goulburn.

The funeral took place on Saturday afternoon, January 3rd, and was one of the largest and most beautiful ever seen in this district. Prior to the service in St Mark's Church, the Rev. F. A. S. Shaw conducted a service at the house for the family. A most impressive service was held in the Church where a large gathering of citizens and brother Masons of Lodge Picton attended to pay their last respects to one so loved and esteemed. Representatives from Lodge Bowral, Campbelltown and Camden were also present.

During the service the Picton band, in the Church grounds, played softly, sacred and solemn music, the strains of which echoed throughout the building.

The Rev. Shaw during the service in the Church could not have paid higher tribute to a man than he did with his heartfelt words, which sentiments were echoes in the hearts of all those who had known the deceased. He said that he was a man among men honest and reliable and his word was his bond. He was a man of generous and sympathetic nature and one capable of kindly understanding. There was no one in the district had such a knowledge of Picton and its people. The Rev. Shaw said that he was a devout member of St Mark's Church, Sunday evenings found him at service sitting in the back seat. His contributions to the funds were frequent and generous. He also lovingly attended to various repair work to the Church building.

He added that though Mr Warters was perhaps a man of few words his good deeds were many and those deeds endeared him to all. Picton will seem strangely different by his absence. He didn't want to die. His illness came as a shock to him, but he had courage and with the sacrament came peace.

The Rev. Shaw then extended to his sisters, brothers and relatives, the deepest and warmest sympathy of all present and expressed the hope that the thoughts he had uttered would in some way warm their hearts and prove a comfort to their minds.

At the conclusion of the service the cortege proceeded to the graveside in the church ground where Worshipful Brother E. H. Oakman read the Masonic burial service. Regalia was worn by all members. After the lowering of the coffin, the Picton band played "Nearer My God To Thee" and then by special request "Peace, Perfect Peace".

The graveside was banked with dozens of beautiful wreaths.

We join with the people of the district in extending our deepest sympathy to his sorrowing relatives.

The Warters Family Burial Plot in St Mark's Graveyard is a large one with five headstones, including the large main memorial illustrated, and a number of inscriptions and plaques.

Buried in the family plot are the following members of the Warters family:-

* Otto Ernest Warters	died	28 September 1955, aged 78
Rebecca J. Warters	died	29 July 1968, aged 91
Daphne Ray Murray	died	26 August 1977, aged 64
Remie Amy Warters	died	15 October 1972
Eliza Warters	died	28 January 1922, aged 69
John Edmund Warters	died	18 April 1923, aged 72
Elisie Mabel Crawley	died	7 July 1970, aged 88
Isabella Warters	died	3 Feb 1964
Neville Edmund Warters	died	22 November 1967
Sydney John Wartyers	died	2 January 1948, aged 74
Vera May Terrett	died	22 July 1954
* Mildred Ada Wilson	died	5 July 1951
Myra Olivette Ray	died	31 July 1959, aged 72
Wildred George Warters	died	30 March 1936, aged 60
Stella Ray Power	died	2 November 1936, aged 57
John Warters	died	28 November 1916, aged 2 1/2 years
Noni Margaret Wilson	died	26 February 1969, aged 46
Remi May Wilson	died	13 March 1986, aged 67
Sid Wilson	died	1977, aged 86



* Names appear on two inscriptions.

The Picton Society holds four of the **Warters Undertakers Burial Registers**. Thanks to a Heritage Grant of \$100 these will be microfilmed shortly. The remainder of the registers were donated some time earlier to the Mitchell Library by E.O.Ray. Within these registers family history researchers with family from Picton & District will find interesting (perhaps some would say sad) reminders of their ancestors. The type of information provided includes, for example, cost of burial, exact place of burial, cost of curbing around grave, who paid for the burial expenses, etc.

Below are a few more examples of what can be found within the society's burial records:

20.		Receipts			
1945		Balance as per P. Books 31-12-44		71	1 5
Jan	27	Grounds Interment Minister & Digging Henry G. Hill. Sec I No 81		4	0 0
Feb	15	Grounds Interment. Minister & Digging. Emily G. Tottardell. Sec D. 77A		4	0 0
May	29	Monumental Fees re George John Pascoe		1	2 6
Aug	4	Interest Grounds Interment Minister & Digging Kingsley Huggitt. Sec II. 33		1	7 5
Aug.		Monumental Fees re Frederick Spencer		3	10 0
		W ^o Spencer. 1 allotment adjoining F. Spencer		1	2 6
Oct		Monumental Fees re Alfred J. Peck		1	2 6
		Monumental Fees Harry B. Potter		1	2 6
Nov	15	Ground Interment Digging Ruby Emily Maynard S B No 36		4	0 0
				93	3 10

On the previous page is an extract from the Warters Undertakers Cash Book, page 20, the year 1945.

The two entries for August 4 show the amount of money paid by the Huggett family for the interment of their child, Kingsley. He was laid to rest in Row D of the Church of England Section of Upper Picton cemetery. The society's transcripts provide the following inscription:

**IN LOVING MEMORY OF
OUR DEAR SON & BROTHER
KINGSLEY HUGGETT
KILLED AT PICTON 2nd AUG. 1945
AGED 7 YEARS
Too dearly loved to
Be ever forgotten**

Colin Post's Index to Announcements in Local Newspapers shows that "In Memoriam's" were placed in the Picton Post on 31 July 1947; 5 August 1948; 5 August 1950; & 1 August 1956.

Another inscription from the Church of England Section of Upper Picton Cemetery is the following:

**IN LOVING MEMORY OF
MY DEAR HUSBAND
& MY DEAR FATHER
GOERGE MICHAEL
VOCK
PASSED AWAY 17-5-66
AGED 66
"At Rest"**

A look at the Warters Burial Registers tells us that George Michael Vock was not the first of his family to be buried in Upper Picton Cemetery.

Page 8	Fees Received for Burials, Curbing, etc 1895 June 12 Grave for Johann Vock	10/-
Page 95	Burials in Church of England Section, U/Picton Sec. B Plot 19 Joan Vock Plot 20 George Michael Vock Plot 22 Christian John Vock	
Page 36	General Interments 1907 June 5 Madeline Vock	
Page 4	Cash Book 1924 Oct 15 Matilda Vock	10/-

In Colin Post's Index to Announcements in Local Newspapers is a detailed "Death Notice" / "Obituary" for George Michael Vock from the Picton Post, 19 May 1966.

MEDICAL EXPLANATIONS

Compiled by Ken Farrell

Have you ever wondered about that mysterious disease recorded on your ancestor's death certificate? What did he or she really die from?

Listed below is a selection of explanations of some medical terms used last century.

Anasarca	Massive swelling of legs, trunk and genitalia, due to retention of fluid (oedema), congestive heart failure and some forms of renal failure.
Aneurysm	Loss of blood to veins, not by capillary bed, causing haemorrhage in brain.
Apoplexy	Stroke. Interruption of blood to brain causing tingling, weakness to paralysis.
Ascites	Accumulation of fluid in peritoneal cavity, causing swelling.
Asphyxia	Suffocation.
Asthenia	Weakness or loss of strength.
Atrophy	Wasting away of normally developed organs or tissue due to degeneration of cells. Occurs through undernourishment or disease such as poliomyelitis.
Bright's disease	Nephritis. Inflammation of kidneys.
Candidiasis	A yeast like fungus infecting the moist areas of the body, also known as thrush.
Catarrh	Excessive secretion of thick phlegm or mucus in nasal or air passages.
Colitis	Inflammation of the bowel.
Consumption	Any disease causing wasting of tissues, especially (formally) pulmonary tuberculosis.
Croup	Inflammation of the larynx from viral infection.
Cutaneous	Disease of the skin.
Dentition	Refers to the twenty baby teeth, complications include fever, convulsions and pneumonia.
Diphtheria	Throat infection (highly contagious).
Dropsy	see Oedema.
Eclampsia	The occurrence in a woman of one or more convulsions, not caused by other conditions. May be preceded by a sudden rise in blood pressure and a sudden increase in oedema and development of oliguria. Convulsions are usually followed by coma. It is a threat to both mother and baby, and must be treated immediately.
Erysipelas	Infection of the skin and underlying tissues of the face.
Gravel	Small stones found in urinary tract, causing severe pain and blood in urine.
Hemiplegia	Paralysis of one side of body caused by disease of opposite hemisphere of body.
Hepatic	Relating to the liver.
Hodgkins disease	Malignant disease of lymphatic tissues, characterised by painless enlargement of one or more lymph nodes in neck, armpits, groin, chest or abdomen.
Idiopathic	Denoting a disease or condition, the cause of which is not known or that arises spontaneously.
Inanition	Malnutrition or intestinal disease.
Intussusception	The telescoping of one part of the bowel into another, resulting in intestinal obstruction, most common in children under four years. Gangrene of bowel may result.
Leucocythaemia	Leukaemia.
Leukaemia	A blood disease in which the white blood cells are greatly increased. The spleen is enlarged and the lymphatic glands all over the body become swollen.
Lockjaw	Tetanus. Acute infection of nervous system causing muscular stiffness / spasm in jaw, neck and back, etc.

Malassimilation	Failure of the process by which food is taken into the cells of the body after they have been digested and absorbed.
Marasmus	Severe wasting in infants, when body weight is below 75% of expected, due to malabsorption, wrong feeding, diarrhoea, vomiting, metabolic disorder or disease.
Meningitis	Inflammation of the tissue enclosing the brain and spinal cord.
Mesenteric	Affecting the double layer of the peritoneum.
Metritis	Inflammation of the uterus.
Oedema	Accumulation of fluid, usually in the chest / abdomen.
Oliguria	The production of an abnormally small volume of urine. May be result of copious sweating, kidney disease, oedema, loss of blood, diarrhoea or poisoning.
Parturition	Childbirth.
Periostitis	Inflammation of the tissues around the bone.
Peritonitis	Inflammation of the peritoneum, caused by bacteria spread via the blood stream.
Perityphlitis	Inflammation of tissues around the caecum, which is a blind-ended pouch at the junction of the small and large intestine and to which the appendix is attached.
Pertussis	See Whooping Cough.
Phthisis	Any disease resulting in wasting of tissues, commonly used to denote the type of wasting associated with pulmonary tuberculosis.
Pleurisy	Similar to pneumonia, always associated with some other disease of lung, chest wall or abdomen.
Prostatitis	Inflammation of the prostate gland, may be due to bacterial infection and can be acute or chronic.
Prostration	Extreme exhaustion.
Puerperal	Infection of the female genital tract following childbirth, occurring twenty-four hours or more after delivery.
Rubella	German measles.
Scarlet Fever	Highly contagious disease mainly in children, resulting in fever, sickness, sore throat and a widespread scarlet rash that spreads from the armpits and groin, to neck, back, limbs and tongue. Complications include ear and kidney infections, and swollen neck glands.
Scarletina	See scarlet fever.
Sclerosis	Hardening of tissue, usually due to scarring after inflammation.
Stroke	See Apoplexy.
Syncope	Loss of consciousness induced by temporary insufficient flow of blood to the brain.
Tabes	Neurosyphilis occurring 5-20 years after infection, affecting sensory nerves. Severe pains in legs and trunk, loss of bladder control and unsteady gait.
Tetanus	See Lock Jaw.
Thrush	See Candidiasis.
Tuberculosis	An infectious disease. Common form is inhaled into the lungs where it sets up a primary tubercle and spreads to the nearest lymph node. People can show no symptoms but carry the disease. Symptoms include fever, night sweats, weight loss and the spitting of blood.
Typhoid Fever	An infection of digestive system causing weakness, high fever, rash of red spots on chest and abdomen.
Uraemia	Presence of excessive amounts of urea and other nitrogenous waste compounds in the blood. This occurs in kidney failure. Results in nausea, vomiting, lethargy, drowsiness and, if untreated, death.
Whooping Cough	A contagious catarrhal disease of the respiratory mucous membrane (nose, throat and bronchial tubes). Its distinguishing feature is the well-known "whoop".

SOURCE: Oxford Reference Dictionary of Nursing.

INDEX OF NEWSPAPER ANNOUNCEMENTS

Published below is another instalment of this index. We are indebted to member Colin Post who has extracted these announcements from local newspapers. The society has copies of the newspapers referenced and Colin has painstakingly transcribed the details relating to the event. They are available for viewing at the Resource Centre in the "Coach House", Picton, or by writing to the Secretary, PO Box 64, Picton, 2571. (Don't forget to include a business size stamped self addressed envelope for details.)

A:- Appreciation B:- Birth C:- Correspondence D:- Death
 I:- In Memoriam L:- Legal M:- Marriage O:- Obituary
 P:- Probate R:- Return Thanks

SURNAME	FIRST NAME	RESIDENCE	TYPE	DATE
Davis	Alfred		R,D	19 Oct 1950
"	"		R	2 Nov 1950
"	"		I	14 Oct 1950;1953
Davis	Alfred John	Thirlmere	C	27 May 1971
Davis	Anjeanetta		I	11 Nov 1948
Davis	Annie Charlotte	Redbank & Sydney	C	22 March 1962
Davis	Charles Henry	Barbour St Thirlmere	C	2 July 1958
"	"	"	O	9 July 1958
"	"	"	L	4 Feb 1965
Davis	Charlotte		C	18 March 1965
Davis	Dinny		I	15 March 1962
"	"		I	14 March 1963
Davis	Emma		I	10 June 1953
Davis	Ethel Anne		I	22 Jan 1970
Davis	Florence Emma	Thirlmere	L	5 Feb 1948
Davis			I	6 Nov 1947
Davis	James George (Divvy)		I	18 March 1953
"	"		I	12 March 1958
"	"		I	8 March 1961
"	"		I	12 March 1964
Davis	Henry William	Thirlmere	D	9 Sept 1965
Davis	John Albert		I	11 July 1956
"	"		I	Jan/Feb 1956;61-4;68;70
Davis	John		I	16 Nov 1950
Davis	Kathlyn Clare	Campbell St Thirlmere	C;D	8 April 1953
"	"	"	R	29 April 1953
Davis	Maggie Jane		O	11 Nov 1948
"	"		I	28 Sept 1950
Davis	Peter Raymond	Thirlmere	C	17 Oct 1968
"	"	"	I	8 Oct 1970
Davis	Robert		I	9/4 May 1947/50
Davis	Robert	Thirlmere	R	30 Oct 1947
Davis	Robert	Thirlmere	L	18 March 1948
Davison	Arthur James Russell		D	25 June 1970
Degiorgio		Kader St Bargo	R	15 Nov 1953
Delaney	Elsie		C	5 Aug 1965
Delaney	Helen Olive		D	26 Feb 1987

SURNAME	FIRST NAME	RESIDENCE	TYPE	DATE
Dellit	Lesley John		I	16 Jan 1987
Denman			I	29 June 1950
Dennis	George	Thirlmere	C	7 July 1954
"	"	"	L	21 July 1954
"	"	"	R	4 Aug 1954
De Piazza	Mrs	Lidcombe	C	27 Jan 1966
Devine	E. J.	Old Main Rd Bargo	C	5 April 1962
"	"	"	R	19 April 1962
Devrell	William Charles		I	25 Nov 1953
Devitt	James		O	19 June 1929
Dick	Joseph Alphonso L.	Picton Lakes (Hermit)	C	30 Jan 1947
"	"	" "	L	23 Oct 1947
Digger	John Joseph	Scroggies Rd Thirlmere	R	8 Feb 1962
"	"	"	O	15 Feb 1962
Ditton	Kevin Lloyd	Old Jerusalem Rd Oakdale	C	4 June 1964
Doane	(Canon)	Mowll Village Castle Hill	C	13 April 1967
Dobbie	David		O	19 June 1929
Dobbie	Hugh		O	26 June 1929
Donnison	Grace Mary	Wilton	O	15 April 1948
Donohoe	Basil Michael	"Hardwick" The Oaks	L	16 Dec 1965
Dorrington	James		I	31 May 1973
Dougherty	Julie Louise	New Zealand	C	22 July 1965
Dowling			I	23 Jan 1947
Dowling	Betty	Oakdale	R	23 Jan 1947
"	"	"	I	Dec 1948; 1950
Dowling	Francis Rachel		I	11 May 1950
"	"		I	6 May 1953
Dowling	Jane Elizabeth	Carlton Rd Thirlmere	D	15 May 1947
"	"	"	I	6 May 1948
Dowling	John		I	2 Feb 1947
"	"		I	23 Feb 1950
Dowling	John Joseph	Sydney (late Thirlmere)	O	17 June 1948
Dowling	Rachel Frances		I	11 May 1950
Downes	Edgar		C	26 August 1953
Doyle	Eric James	Bargo	L	30 May 1968
Doyle	Pamela Judith		I	7 May 1958
"	"		I	May 1961; 1964; 1967
Drage	William Henry	Berowa / Bargo	C	14 Jan 1965
Draper	A. E.	Menangle St Picton	R	9 July 1958
Dredge	Edgar George		I	16 Sept 1953
Dredge			R	8 Sept 1954
Dredge	John	"Gwendymere"	I	16 Sept 1948
"	"	Douglas Park	I	Sept 1947; 1950
Drewett	Ivy Matilda	Balgowlah	R	17 Nov 1954
Drewett	Percival	Visitor to Douglas Park	C	15 Jan 1948
Druitt	Flora Louise		I	22 Feb 1969
Drury	Graham	Birrell St Bondi	C	10 Sept 1964
Duncan	Hugh	Southern Rd Yanderra	C	29 April 1971
Duncan	Ian Campbell	Old Southern Rd Yanderra	R	1 Feb 1968
Duncan	James	Hume Hwy Tahmoor	O	17 June 1948
"	"	"	R	1 July 1948
"	"	"	L	25 Nov 1948