

ISSN 1321-1439

The Stonequarry Journal



Published by

Picton and District Historical and Family History Society Inc

Price \$2.00

May 2005

Volume 19 No 1

If undelivered please return to:
PDHfHS
PO Box 64
PICTON NSW 2571



POSTAGE
PAID

Picton and District Historical and Family History Society Inc.
All correspondence to: **PO Box 64, Picton NSW 2571**

President	Gail Hanger	02 46842179
Vice President	Elaine Callaway	02 46830464
Acting Secretary	Ron Callaway	02 46830464
Treasurer	Ron Callaway	02 46830464
Editor	Debbie Hayes	0421 177907

Journal contributions to:
The Editor
P.O. Box 64
Picton NSW 2571
or
pdhfh@hotnmail.com

Patrons

Michael Banasik—Mayor of Picton
Peta Seaton—
Alby Schultz—Federal Member for Hume

Appointed Positions

Librarian	Helen Hanger
Research Officer Historical	Kate Holmes
Research Officer Family History	Gail Hanger & Helen Hanger

Journal Contributions

The Stonequary Journal is your journal and without contributions this journal would not exist.
Contributions should be submitted on an IBM formatted disk or typed or handwritten to

The Society does not hold itself responsible for opinions expressed or statements made by authors of papers in this Journal.

The Editor,
P.O. Box 64 Picton NSW 2571
or emailed to
pdhfh@hotnmail.com

Web: <http://www.stonequary.com.au/pdhfh/index.html>

Membership Fees – Due 1 July each year

Penioners and school students:	\$15.00
Single:	\$20.00
Family	\$25.00

Meetings

Meetings are held on the first Saturday of each month at 9.30 am except for January.
Meetings are held on the first floor of Wollondilly Public Library, Menangle Street, Picton.

RESEARCH ROOM

The Research Room is located on the first floor of Wollondilly Public Library, Menangle Street, Picton.

Opening Hours

On each Thursday from 10 am to 3 pm.

On the second and fourth Saturday of each month from 9.30 am to 12 Noon and at other times by appointment with the Librarian.

RESEARCH FEES

Members:	Free
Non Members:	\$10.00 per hour + photocopying (first hour payable in advance)
Written Inquiries:	\$20.00 + photocopying

COPYRIGHT: No article, photograph or item from this Journal may be reproduced without the written permission of the Society.

DISCLAIMER: Although all reasonable care is taken, the Picton and District Historical and Family History Society Inc. accepts no responsibility for the accuracy of information which is printed in good faith from other sources, or for any opinions expressed in this Journal.

Other Publications

Thirskmere Public School 1888 – 1988 \$ 6.00

The Antills of Jarrusfield Picton \$10.00

Picton \$ 5.00

Calendars 2003 \$ 5.00 12 wonderful local photographs

Post Cards 5 for \$ 1.00

Fact Sheets \$.50 each

ISSN 1321-1439



The Stonequarry Journal
Journal of the Picton & District Historical and Family History Society Inc.

Contents

May 2005

The Skellet Family of Picton by Syd Percival.....	3
Picton Railway Viaduct—Picton	5
Looking Back in History, By Wilf Wortley.....	9
E.C. Rose's General Store By Wilf Wortley	10
J. L. O'Connor—The Post Office Store By Wilf Wortley	11
Members Birthdays.....	17
Old Recipe	18



ARROW
OFFICE PRODUCTS

Stationery & Office Supplies
For the Home, School or Office
Printer Cartridges/ Toners/ Ribbons/ Fax film
Office Furniture & Equipment
Photocopying & Plan Printing

10% Discount on Adult & Student
Educational supplies.

109 – 111 Argyle Street Picton
Ph - 4677 1600

Presidents Report

PUBLICATIONS FOR SALE

Coach House Chronicles

Lieut. General Sir Thomas Picton \$ 3.00

Harmony Homes \$ 5.00

Vault Hill Picton \$ 3.00

Tahmor Past Office \$ 3.00

St Mary Towers \$ 5.00

Antonio Manohs \$ 3.00

Cemetery Transcripts

Bargo General Cemetery \$10.50 *only a few copies left*

Burial Records of St Marks Anglican Church Picton \$12.00 *Out of Print*

Redbank Uniting Church - A Pictorial View \$20.00 *Just Released*

St Marks Anglican Picton Cemetery Transcripts \$15.50 *only a few copies left*

Upper Picton Cemetery \$20.00 *only a few copies left*

Thirmore Cemetery \$20.00 *only a few copies left*

Stroll Through St Marks Churchyard \$ 8.00

Marriage Transcripts:

Marriage Records of St Marks Vol. 1 \$15.00

Marriage Records of St Marks Vol. 2 \$15.00

Marriage Records of St Marks Vol. 3 \$20.00 J

Plea from the Editor

It is hard to get enough material to fill the journal, I'm asking please send anything big or small it doesn't have to be typed, I'll gladly include it if space permits.

The idea of this journal is for our Members to enter their missing ancestors, also to include stories about them hoping, that someone else is connected to their family and that they may get in touch with them, as I'm finding in the next journal.

The Editor

Gail Hanger

We are continuing our series on the pictorial recording of headstones/cemeteries and hope to have the next one published before the end of the year.

We attended the open day at the Wollondilly heritage centre as part of Heritage Week and while the day was quiet it was quite profitable for the society. All the local historical societies were in the same building, so we had plenty of time to check out publication and display material. Special thanks to members Ron and Elaine and Kate who attended the day on our behalf.

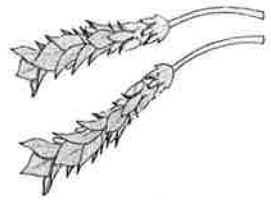
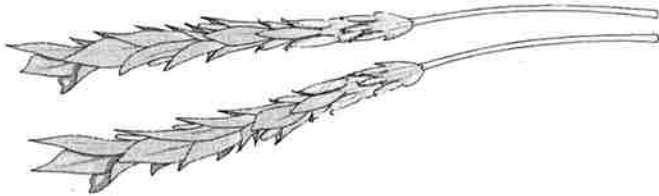
Old Recipe

Chicken and Corn Soup

- 1 can of Creamed Corn
- 1 cup Shredded Cooked Chicken
- 1 1/2 cups Water
- 1 1/2 cups Milk
- 1 medium Onion finely chopped
- 3 Chicken Stock Cubes
- 1 tblspn Parsley
- Salt and Pepper

Method:

Combine corn, water, stock cubes and onions, Bring to the boil. Add chicken, milk, parsley minutes. Serve piping hot with additional parsley and a swirl of cream.



Taken from the Stonequarry Journal June 1996

The Skellett Family of Picton

By the late Syd Percival

Following the arrival of the railway to Picton in 1863, the New South Wales Government let contracts world wide to carry out certain work in connection with the railway from Picton onwards. So it happened that a French company was successful in winning one of these. Now a very competent Englishman, by the name of Skellett was employed by the company and lived with his family in a French town called Coville. He was selected to go to Australia to be in charge of this work which he duly did, bringing his family with him and settling in Moss Vale.

I believe his two sons were young men and soon became storekeeper in partnership in that town. However, not getting on agreeably, they sold and separated. They both came to Picton, the eldest one obtained the license of the Menangle Street Hotel, which later became "The Imperial" and ran it for several years. The younger son, named Albert, took over a grocery shop in the lower end of Menangle Street and built a neat cottage close by, naming it "Coville" after his earlier home in France.

Soon after he married Kate Percival, daughter of John and Isabella Percival of Northampton Dale, Appin, in the year 1880. They travelled by train to Melbourne to spend their honeymoon. However, as the line to Melbourne was still not completed they had to travel a short section by coach. Returning in three weeks time they travelled home completely by train after the gap in the line was finished.

On reaching Glenrowan, the smoke was still issuing from the postholes of the hotel that was burnt down a few nights beforehand, when Ned Kelly was captured. However, they were dogged by bad luck for many years of their early married life. Soon after they had

settled into their new home, the store was burnt down and Albert didn't renew it and instead became a valuable employee of the well know old time store of Pickard's, which had started up nearby, still in Menangle Street and kept him employed for years after his retirement age, mainly because of his popularity with the customers. I feel sure many old Picton residents will remember him on account of his most genial and pleasant nature.

Another occurrence of real tragedy was when their only son, Stanley, together with his boy cousin were drowned in the Nepean River at Maldon as teenagers. The sadness of it really shattered the townsfolk, causing the closure of all the shops for a half day of the funeral. There were also daughters of the marriage, Jessie and Madge who also went into business in Argyle Street, Picton in the late twenties with a refreshment shop. Some of their main custom came from the passengers of the buses running to and from Canberra through Picton.

In a few short years Jessie fell ill and died. Madge, still a spinster, as too was her sister managed the shop on her own with various female help until finding it too much in her aging years, sold out and took a position at the Queen Victoria Hospital, Thimere, assisting in the kitchen. Then after a few more years she retired and bought a unit at Eastwood where she died about 1980. So far as I know bringing an end to the last of the Skellert's of Picton. Madge looked after her father during the last years of his life. He loved coming with her to the shop each morning where he would sit in an arm chair in front of the fire with the big wireless set turned on for entertainment. Many of his old cobbers would join him for a yarn, especially on race days when the excitement was terrific. I believe that he died in his early eighties.



MEMBERS BIRTHDAYS

A Very Happy Birthday to All from the Committee and Members of the PDHPHS

MARCH

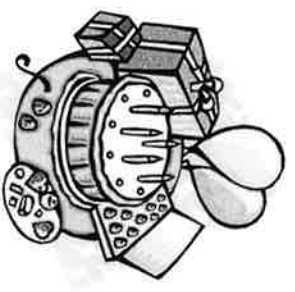
- Val Astley
- Frank Cracknell
- Gail Hanger

APRIL

- Wilf Wortley

MAY

- Laurie Taylor
- Edna Townsend
- Robyn Hanssen



Burials
A Pictorial View

REDBANK UNITING CHURCH
(Formerly Wesleyan Chapel)
2004




Illustration by Barry Saxton—Picton

We have now released our new updated edition with photographs

The Redbank Uniting Church Cemetery Transcripts 2004

This book has burials at Redbank Uniting Church Cemetery from 1853 until 2004

You can get your copy of our new book from the Society rooms or by post.

Book can be ordered
Please send your order and payment to:

The Secretary,
Picton and District Historical and Family History Society Inc.
P.O. Box 64, Picton NSW 2571

Book \$20.00 each + postage and handling \$5.00

Please send me _____ Books @ \$25.00 each

Total payment enclosed: \$ _____

Name: _____

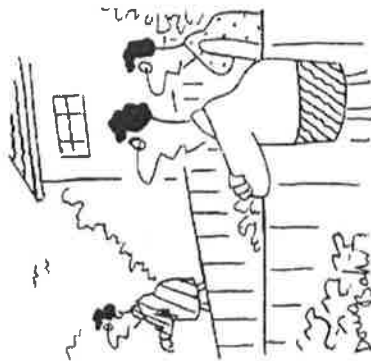
Address: _____

Picton Railway Viaduct – Picton

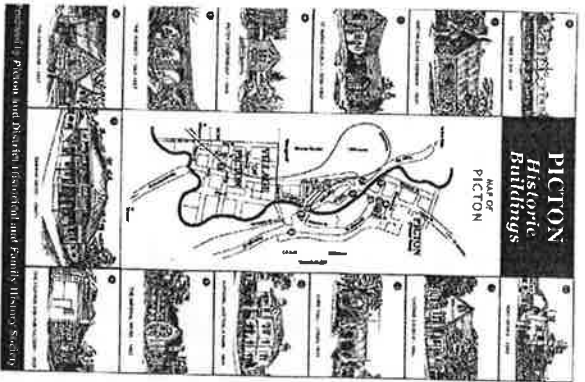
The Railway Viaduct over Stonequarry Creek was built 1863-67 by a contractor named Ambrose Crowshaw and not convict labour, contrary to popular rumour only one man Lewis Cragie was killed by a fall while working on the viaduct. Two other men died of natural causes during the construction of the viaduct and the three men were buried in the Churchyard of the Church of St. Marks Church of England Picton.

The Viaduct has 5 x 40 foot arches, is 276 feet long and its highest part is 78 feet above the creek bed. Between the station and the viaduct was the level crossing for vehicles. Picton Viaduct was the second constructed in NSW, the first over Long Cove at Lewisham, was completed in 1854 but demolished and replaced by an iron bridge in 1886. Our Stonequarry Viaduct is now the oldest railway viaduct still in use by N.S.W. railways.

Doug Baker



"I want say she's nossey, but loads don't go to a genealogist, they go to her."



Tea towel For SALE

**Our Tea Towel can now be
purchased at the Society rooms
or by post.**

Please send your order and payment to:

The Secretary,
Picton and District Historical and
Family History Society Inc.
P.O. Box 64, Picton NSW 2571

Tea Towels \$10.00 each + postage and
handling \$3.50

Please send me _____ Tea Towels @ \$13.50 each
Amount of Tea Towels

Total payment enclosed: \$ _____

Name:	_____
Address:	_____

Leslie Crossman Harris were each Post Masters for short periods. On the 7th November 1925, John Levy O'Connor took over from Leslie Crossman Harris as Post Master and he reopened the grocery store. Mr. Vic Dogger, on the 7th April 1930, took over the Post Office Store from J. O'Connor and carried on the business as such until the 8th December 1930 when all business ceased on this site.

The Hewison Family retained ownership of this corner block until 1992.

The newly wed Vic and May Dogger arrived in Douglas Park late 1928 and moved into the cottage which is next to the school residence, it was called "Talopia". Vic purchased the old community hall from Tom Martin for 15 pounds and remodelled it into a two bedroom home come Post Office Store and on the 9th December 1930 it was opened for business.

When I came to Douglas Park, March 1942, Alfred and Emily Veness were living in the "Talopia" cottage, and by all accounts, had resided there for quite a few years. Alfred Veness was a railway officer and was employed at the Douglas Park railway station. In later years Emily Veness was a patient in Queen Victoria Hospital, Picton, where she remained until her death in May 1987, aged 105 years old.

The Recession Really Started Long Ago

The rural recession has been explained in simple terms by an old time farmer.

"It all started back in '66 when they changed from pounds to dollars – that doubled me bloody overdraft.

Then they bought in kilograms instead of pounds – me bloody wool clip dropped by half.

After that, they changed rain to millimetres and we haven't had an inch of rain since.

If that wasn't enough, they brought in Celsius, and it never got over 0 degrees; no wonder me bloody wheat won't grow.

Then they changed acres to hectares, and I ended up with only half the land I had.

By this time I'd had enough and decided to sell out. I put the property in the agent's hands and then they changed miles to kilometres.

Now I'm too far out of town for anyone to buy the bloody place."

Douglas Park 1925

By Wild Wortley

“Fairview”,- Private Boarding House

First Class Accommodation

Plenty of Milk, Cream and Eggs.

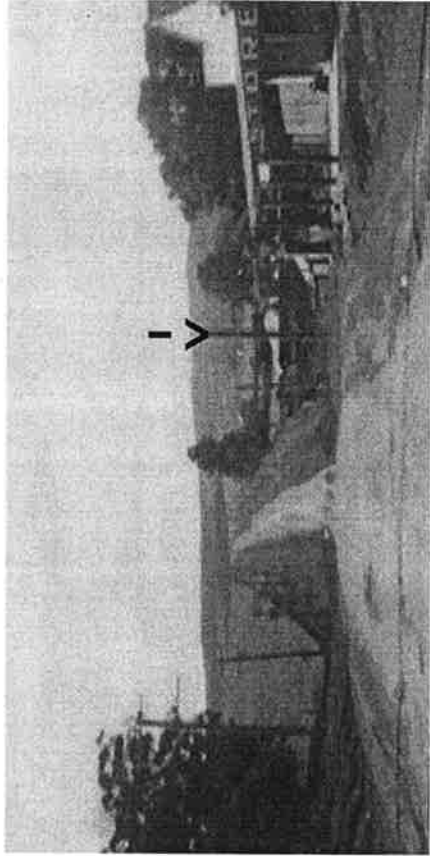
Morning and afternoon tea, large dining room

Piano, spacious verandah. Rooms and kitchen to let

Tariff:- 6/- per day

30/- per week

Mrs. H. Scott
Proprietres



The store building in this photo was, up until 1929, Douglas Park's Community Hall, and I believe it was built by Tom Martin.

The near demolished building beside the Store, was in the early 1900's, home to Mrs. Mary Smart and in those early years had a grocery store in the front. In 1911 the Post Office was transferred from the Railway Station to Smarts Store and she became Post Master. On the 31st October 1912, Mr. E. E. Hewison purchased the home and business from Mrs. Smart and replaced her as Post Master on the 1st November 1912. It would appear that Mr. Hewison closed the grocery section and kept the business solely as a Post Office.

A manual Telephone Exchange was established at Douglas Park on the 1st November 1917 with two subscribers connected. Mr. Hewison resigned as Post Master on the 22nd September 1924. Over the next 14 months this Position changed three times. T. Galway—Frederick John Wade—and

Members Research Enquiries

If you have any information on any of the following families please send information to
The Secretary, PDHFS, P.O. Box 64, Picton, NSW, 2571
(please don't forget to quote the research number.)

Research 1937 Search

Were you born in 1937?

During November 1936—May 1937 a man working at Picton an district, including Bargo, boarded for all or some of that period at the home of a woman, possibly in walking distance of Picton railway station.

A child was born to these two people, possibly in the spring of 1937 (September—November).

It is not known where the child was born or if the woman continued living in the area; or if the child remained with her.

Research O'Connor

We would like to hear from anyone who remembers the O'Connor family who lived in Bargo and later Douglas Park during the depression years. Jack and Mary Ellen O'Connor had the Post Office and General Store in these towns. They had two sons, Desmond and Kevin

Twenty third psalm for genealogists

*Genealogy is my pastime, I shall not stray
it maketh me to lie down and examine half buried tombstones*

it leadeth me to still Courthouses

it restoreth my Ancestral Knowledge..

it leadeth me into the Paths of Census Records and

Ships Passenger Lists for my Surname's sake.

Yea, though I wade through the Shadows of Research

Libraries and Microfiche Readers,

I shall fear no Discouragement, for a strong Urge is with me.

The Curiosity and Motivation, they Comfort me.

It demandeth preparation of storage space for the

acquisition of countless documents.

It anointeth my head with burning Midnight Oil,

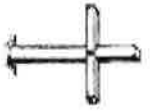
my Family Group Sheets runneth over.

Surely Birth, Marriage and Death Records shall follow me

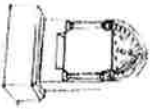
all the days of my life;

And I shall dwell in the house of the Family History Seeker

Forever.



VALE



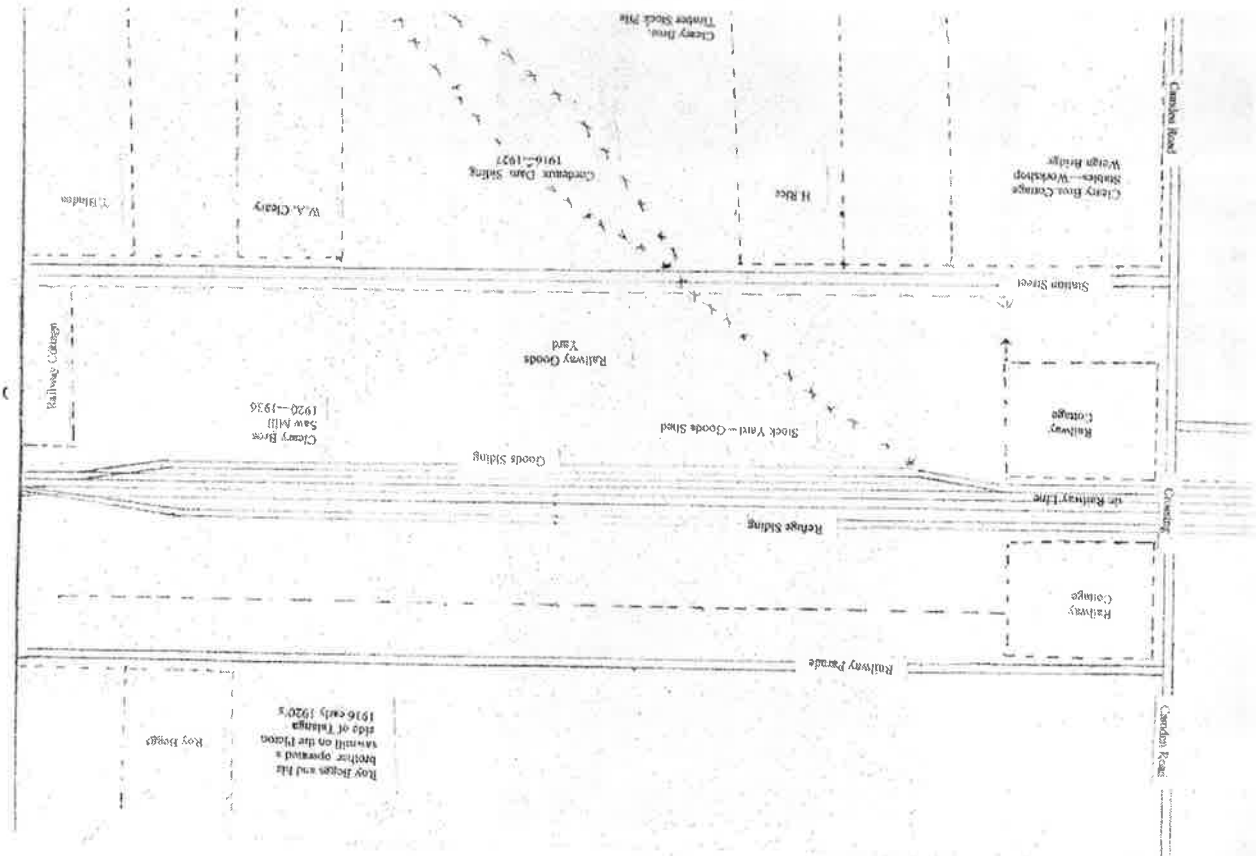
IVY FRANCES BOLLARD

It is with sadness, we report the loss of our life member Ivy Frances Bollard, nee Nolan, one of a family of 16, who died on 2nd April 2005 at Camden. Her father David William James Nolan (or Noland) was born in Glebe in 1852, he came to the district with his father when he was only 6, and by the age of 10 he first visited the Burratorang Valley. He was associated with the Valley for the rest of his life, taking bullock teams over the notorious Jump Up. He was interested in local aboriginal language and history and named his home Jurrrah, meaning "a stationary rock".

David married Mercylla Emily Ditton (born at Stevey's Forrest Camden in 1897) and daughter of Robert Ditton and his wife Martha (nee Jenkins). They had 16 children George, James, Jack, Tom, Ray, Ernie, Harry, Frederick, Beatrice, Ada, Rose, Lily, Martha, Ivy and Joyce. David died at The Oaks in 1937, Mercylla died in 1957.

Ivy Nolan (born on 21st May 1914) married Thomas William Bollard on 21st May 1935 at St Paul's Roman Catholic Church at Camden. Thomas joined the Post Master General's Dept in 1937 as a telephone linesman and he retired from the PMG in 1965, and died in 1972. Ivy and Thomas Bollard had 4 children Diana Frances, John William, Brian Robert and Dennis Martin.

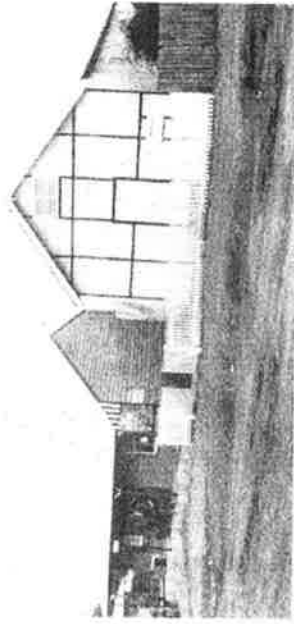
Thomas and Ivy first lived in a rented house in Picton Avenue, where Diana Frances was born in 1936. They then moved to No 16 Lumsdaine St, Picton (this house no longer exists), which was rented from the Presbyterian Church up until 1954. Thomas and Ivy then bought a house, "Waluma" at 246 Argyle St Picton (the house was originally built for Mrs. Hewitt). When Ivy moved out, the house was bought by the Department of Education for use by the Picton Primary School.



Douglas Park

Looking Back in History

By Wilf Wortley



Above is the late Tom Martin's store and also the Community Hall, which I believe was built by Tom. (Early 1900's)

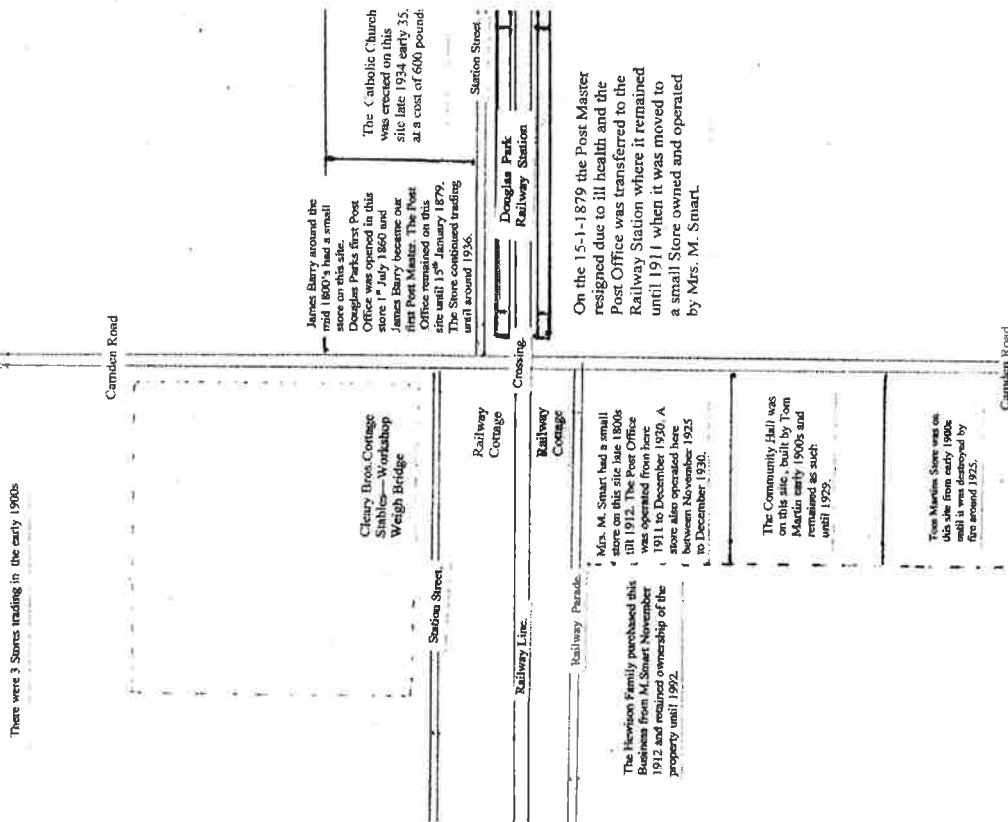
The late Marj Ratcliffe (nee Hewison) wrote that Tom Martin also had a livery stable and garage on this site.

Tom's wife Emma Jane ran the store while he operated a transport business. These two buildings were situated on the site which is now occupied by the P.O.

Martin's Store was destroyed by fire around the mid 1920's.

The Hall itself was converted into a two bedroom home plus P.O. Store by Vic Dogger during 1930.

At Right is a photo of the late Tom Martin taken in 1918.



E. C. Rose's General Store

By Wilf Wortley

Confectionary, Bread, Soft Drinks, Fruit, Meat orders taken.
Phone Douglas Park 8.

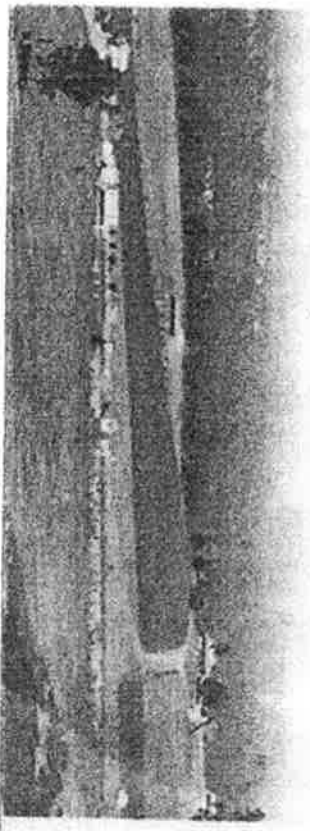


Photo taken 1925 Rose's Store

The building seen between the trees on the left of this photo, in 1925 was Rose's General Store. It was situated on the right hand corner block as you cross the railway line heading south.

In the mid 1800's this store belonged to James Barry.

Our first Post Office in 1860 was opened here, and our first Post Master was James Barry. The Post Office remained on this site until January 1879, the store itself continued trading until 1936.

The cottage on the hill at the right was "Douglass Cottage", constructed by Henry Gritten Douglass, who in July 1882 was granted 800 acres of land here. It fronted the Nepean River in the south, bordered Morceon Park in the east and James Macarthur's "Roshyn" property in the northwest.

With the advent of the Railway around 1863, Gritten Douglass's 800 acre lot was more or less split in half, 353 acres fronted the Nepean River on the south side and 447 acres on the Northern side.

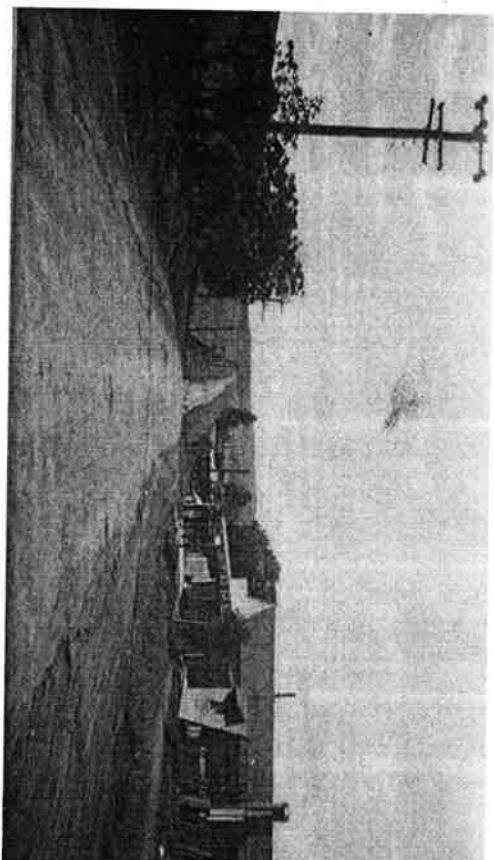
By 1900 both these lots were privately owned, productive Dairy Farms.

J. L. O'CONNOR

The Post Office Store

By Wilf Wortley

Where you can obtain the best of Groceries, Confectionary, Cool Drinks, at Bedrock Prices.
Our Motto: Cleanliness and Civility



The cottage beside The Store was demolished mid 1950's and it was from this building from 1911 to 1930 that Douglas Park Post Office operated. A manual telephone exchange was established on this site 1.11.1917 with 2 subscribers connected.

Pre 1912 a Mrs. Mary Smart ran a small grocery store here. J. L. O'Connor was Post Master from Nov 1925 to April 1930 and during that period also operated a store. Mr. Vic Dogger had this business from April 1930 to 8th December 1930 when all business ceased on this site.

Picton and District Historical

And

Family History Society (Inc)



The Secretary
P.D.H.F.H.S.
P.O. Box 64
Picton NSW 2571

Membership Renewal Form

Name: _____

Address: _____

Telephone No: _____

Email: _____

Date of Birth: _____ (optional)

Signature: _____ Date: _____

If researching a particular family, locality or building, please indicate:-

FEES

Office Use Only

(Please tick which membership is applicable)

- | | | |
|---------------------------|---------|--------------------------|
| Pensioner- School Student | \$15.00 | <input type="checkbox"/> |
| Single | \$20.00 | <input type="checkbox"/> |
| Family | \$25.00 | <input type="checkbox"/> |

Membership Number: _____

Date payment received: _____

Year Financial: _____